

**The Peach Clubhouse Newsletter** imagines the minimum requirements for a sustainable, pleasurable human lifestyle within our earth ecosystem for our future generations.. We would grow a communication and educational system that teaches everyone these minimum skills:

1. Practical, applied compassion;
2. A rule of law that generates practical compassion at the community level;
3. The basic physical requirements for healthy ecosystems.

## **Peach Clubhouse Activities** - September

### **Movie Night** – Second and Fourth Tuesdays

These movies are free at the Peach Clubhouse, 1110 Justine, just northeast of downtown Bryan. They will be preceded by a short BBB vidcast if someone reminds me to do that.

September 13 - *Journey to Planet Earth. Plan B-Saving Civilization.* A documentary about the efforts of Lester Brown (<http://www.earth-policy.org>) to help implement our transition to a sustainable energy economy. Length is 83 minutes. Come to the Peach Clubhouse at 6 PM, movie at 6:30.

September 27 – *Mother, the Film*, breaks a 40-year taboo by bringing to light an issue that silently fuels our most pressing environmental, humanitarian and social crises - population growth. The movie is factual and is not hysterical from any of the perspectives on this issue. Length about an hour and a half. [WWW.motherthefilm.com](http://WWW.motherthefilm.com)

**Radio Spots** – Bare Bones Biology Radio spots may be heard on KEOS FM, 89.1, three times a week. Sunday morning at 6:55 AM, Sunday afternoon at 3 PM, Tuesday evening at 8:55 PM. These may be downloaded at [WWW.BareBonesBiology.com](http://WWW.BareBonesBiology.com) or at <http://FactFictionFancy.Wordpress.com>

Week of September 4 – BBB071-God, Energy and Me

Week of September 11 – BBB072-More Games

Week of September 18 – BBB073-Information

Week of September 25 – BBB074-More Information

## **Other Activities at the Peach Clubhouse**

**September 10 at the Peach Clubhouse** we will meet for a morning of meditation on the practice of generosity (dana) and its potential to open our hearts as we offer concrete help to those most in need. For information call Carla at 979-575-2223. Bring a lunch and an example of a time when you were affected by the experience of giving or receiving any type of generous gift. We will begin at 9 am and plan to eat together at noontime. Come and go as you can.

The Insight Meditation Group holds a weekly half hour sit followed by short discussion on Fridays at 3 to 4 pm.

On Tuesdays and Fridays from 10 to 4 (and other times by appointment) the Peach Clubhouse is available for discussion groups, internet access, use of the meditation room, and other quiet sorts of activities.

## **Other Activities not at the Peach Clubhouse**

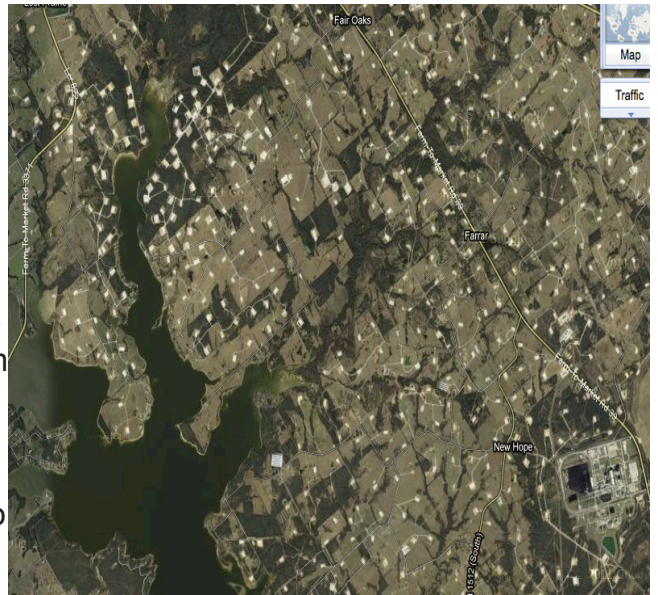
ABS students will hold a screening at the Village Café in Downtown Bryan on Tuesday, September 20 from 7:30-9. ***Call of Life: Facing the mass extinction.*** It's \$5 at the doo

The Insight Meditation Group holds a half-hour sit, followed by a short reading and discussion of a general nature, every Wednesday at noontime at the Unitarian Church in College Station

## Practical Compassion

“The world shows us daily that our own awareness cannot thrive indifferent to what is happening to the awareness of others. As the old sociological paradox puts it, people create society, but society also creates people. Our economic and political systems are not spiritually neutral; they inculcate certain values and discourage others. As our awareness becomes more liberated, we become more aware of the suffering of others, and of the social forces that aggravate or decrease suffering.” From the Tricycle per Carla

What is our culture teaching us about the good life? Greed? Fear? Individualism? That’s what it looks like to me. What would we teach if we wanted to grow a wonderful future for the seventh generation to come?



## Fracking News

I wandered home from Dallas last week through the Oil Patch that has grown up around a coal mine and a power plant North of Jewett and around the shores of Lake Limestone. See the picture from Google. All those little white squares are oil well pads. It looks as though this activity is progressing in the direction of the Brazos Valley. Do we really want more coal and gas-fired smog in our valley? Dallas had an orange alert when I left, and it wasn’t much better here when I arrived. And the water. As though Texas doesn’t have enough problems with water already.

Some of our members are asking this kind of question of people who live in Edge and other parts of Brazos and Robertson County, and to quote another of our members, who has experience with the gas companies: “I think the best we can do is speak out, go to meetings, show support for those who are fighting the battle, etc.”

Be sure to see the movie Gasland when it shows at the University on October 8 in Rudder 510 from 11 to 2, or check out a copy at Brazos Natural Foods to view at home. It’s your community, and fracking is coming this way. Maps can be downloaded from <http://factfictionfancy.wordpress.com>.



<http://www.stoparkansasfracking.org/>  
<http://vbcgab.org/test-results.html>

Fracking in Fort Worth  
I wonder how much the tenants pay for those nice condos?

Don Young  
FWCanDo  
P.O. Box 470041  
Fort Worth, TX 76147  
<http://www.fwcando.org>